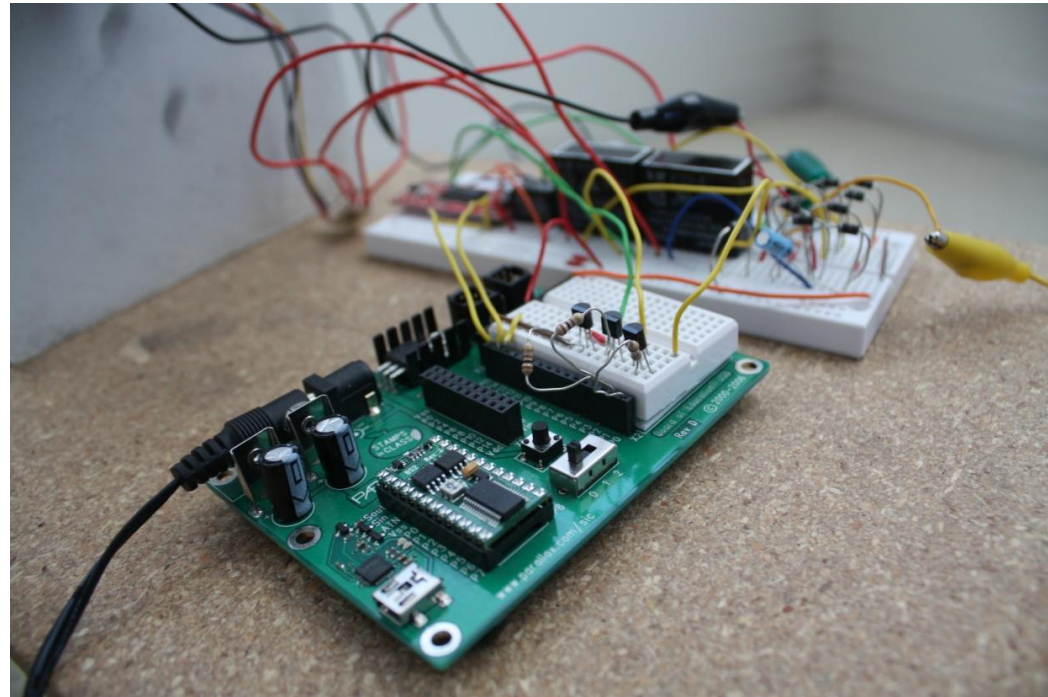


Mechatronics Final Project  
University of Southern California

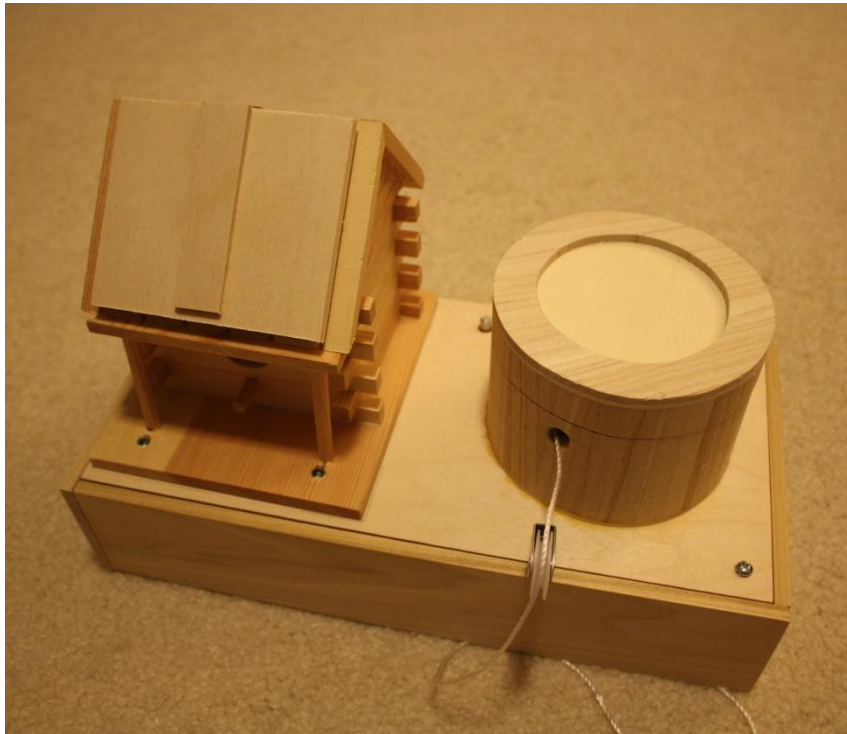
# **GRAVITY-BASED ENERGY STORAGE DEVICE**

# Prototype

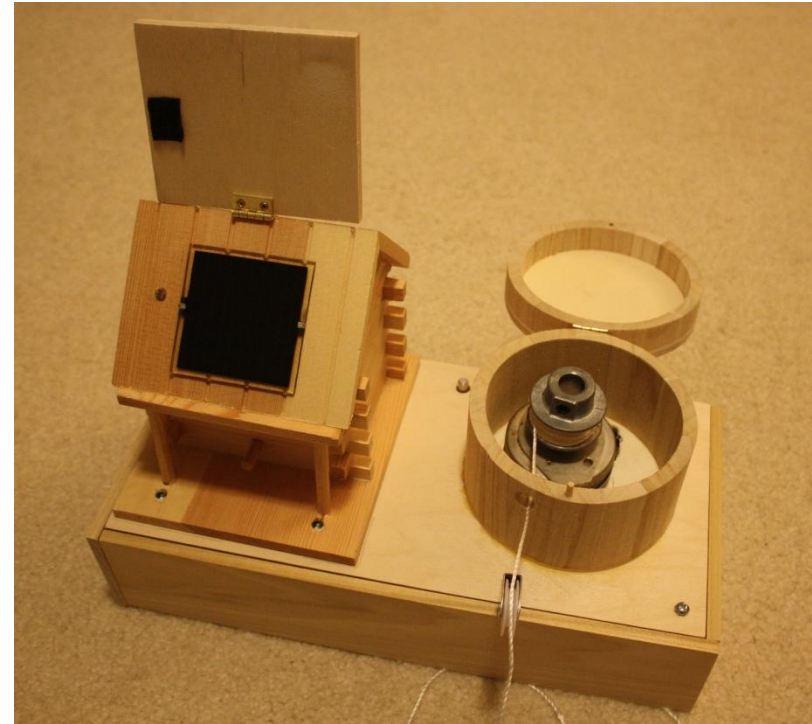
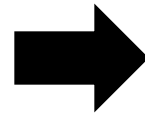


Built stepper motor driver/generator circuit controlled by microcontroller. Troubleshot issues with motor back-EMF.

# Improved prototype



Covering panel switches motor to **generate** mode, which lights LED array inside house.



Exposing solar panel switches the motor to **drive** mode, thus lifting weight.